

IZA DP No. 6659

## The Effect of College Education on Health

Kasey Buckles  
Ofer Malamud  
Melinda Morrill  
Abigail Wozniak

June 2012

# The Effect of College Education on Health

**Kasey Buckles**  
*University of Notre Dame*

**Ofer Malamud**  
*University of Chicago  
and NBER*

**Melinda Morrill**  
*North Carolina State University*

**Abigail Wozniak**  
*University of Notre Dame,  
NBER and IZA*

Discussion Paper No. 6659  
June 2012

IZA

P.O. Box 7240  
53072 Bonn  
Germany

Phone: +49-228-3894-0  
Fax: +49-228-3894-180  
E-mail: [iza@iza.org](mailto:iza@iza.org)

Any opinions expressed here are those of the author(s) and not those of IZA. Research published in this series may include views on policy, but the institute itself takes no institutional policy positions.

The Institute for the Study of Labor (IZA) in Bonn is a local and virtual international research center and a place of communication between science, politics and business. IZA is an independent nonprofit organization supported by Deutsche Post Foundation. The center is associated with the University of Bonn and offers a stimulating research environment through its international network, workshops and conferences, data service, project support, research visits and doctoral program. IZA engages in (i) original and internationally competitive research in all fields of labor economics, (ii) development of policy concepts, and (iii) dissemination of research results and concepts to the interested public.

IZA Discussion Papers often represent preliminary work and are circulated to encourage discussion. Citation of such a paper should account for its provisional character. A revised version may be available directly from the author.

## ABSTRACT

### The Effect of College Education on Health<sup>\*</sup>

We exploit exogenous variation in college completion induced by draft-avoidance behavior during the Vietnam War to examine the impact of college completion on adult mortality. Our preferred estimates imply that increasing college completion rates from the level of the state with the lowest induced rate to the highest would decrease cumulative mortality by 28 percent relative to the mean. Most of the reduction in mortality is from deaths due to cancer and heart disease. We also explore potential mechanisms, including differential earnings, health insurance, and health behaviors, using data from the Census, ACS, and NHIS.

JEL Classification: I12, I23, J24

Keywords: health, college education

Corresponding author:

Abigail Wozniak  
University of Notre Dame  
Department of Economics  
441 Flanner Hall  
Notre Dame, IN 46556  
USA  
E-mail: [a\\_wozniak@nd.edu](mailto:a_wozniak@nd.edu)

---

<sup>\*</sup> The authors would like to thank Bill Evans, Bob Kaestner and seminar participants at the Population American Association (PAA) Meetings, the Society of Labor Economists (SOLE) Meetings, University of Illinois at Chicago, and the University of Notre Dame for helpful comments. All errors are our own.

## **I. Introduction**

Schooling is highly correlated with subsequent health outcomes. For example, in 2007, the age-adjusted mortality rate of high school graduates aged 25 to 64 was more than twice as large as the mortality rate of those with some college or a collegiate degree (Xu, et al., 2010). If these associations between health and education reflect casual effects, they would represent a significant non-pecuniary return to education. They would also imply that policies to increase educational attainment could serve as an important means for improving health. However, there is substantial debate about whether these associations actually represent causal effects (see the reviews by Grossman, 2006, and Cutler and Lleras-Muney, 2008). This paper is the first to provide a causal estimate of the effect of college completion on mortality. In doing so, we extend our understanding of the impacts of education on health to a new part of the schooling distribution, where the observed health gradient in education is steeper.

We use variation in college attainment induced by draft-avoidance behavior during the Vietnam War in an instrumental variables strategy, as in Malamud and Woziak (forthcoming). This enables us to identify the effect of increased higher education on the later health status of men who were eligible to be drafted into the Vietnam War. This strategy builds on Card and Lemieux (2000, 2001) who document the excess educational attainment among cohorts induced to enter college in order to defer conscription. While Card and Lemieux focus on differences in induction risk across birth cohorts, we also exploit state level variation in induction risk within cohorts. The existence of state level variation allows us to decompose national induction risk into two constituent parts: induction risk faced by a young man's own state cohort and risk faced by young men of that cohort in the rest of the country. This decomposition yields two instruments, which we use to identify the two endogenous variables—education and veteran status—in our empirical framework. This approach is an advance over studies that used the Card and Lemieux measures

to identify the effect of college going on health outcomes using only year to year variation in induction risk (e.g., De Walque, 2007; Grimard and Parent, 2007; MacInnis 2006).

We merge our data on national and state-level induction risk with the Vital Statistics Mortality Files from 1981 to 2007 and the U.S. Censuses for 1980, 1990, and 2000 to construct birth state by cohort level mortality rates. We also include information about basic demographic characteristics, cohort size, and labor market conditions at the time of entry from a variety of additional sources. Our instruments predict both veteran status and educational attainment for men in the affected cohorts, with the increase in education coming primarily from increased post-secondary schooling attainment. We therefore have a viable instrument for educational attainment at higher levels that can be purged of its correlation with veteran status for the Vietnam cohorts.

We focus on the cumulative mortality rate between 1981 and 2007 and perform our main analysis using data aggregated to the birth state-birth year cohort level. We first establish that the well-known gradient between education and health status is present and statistically significant in our Vital Statistics data using OLS specifications. Specifically, OLS shows that a birth state-birth year cohort with 100 percent college completion is associated with approximately 100 fewer deaths per 1,000 persons compared to a cohort with no one completing college. Our instrumental variables estimates indicate an effect that ranges from 93 to 172 fewer deaths per 1,000 persons, with our preferred specification yielding a magnitude similar to the OLS estimate. For the birth state-birth year cohorts in our sample, this translates into a reduction in mortality of 42.8 per 1,000 for states with the highest induced completion rates versus the lowest. Furthermore, none of these 2SLS estimates are significantly different from the OLS estimates. Results using 10-year mortality rates for the 1980s, 1990s and 2000s show that the effects of college completion on health are not confined to any particular decade. The largest effects

are found for the impact of college completion in lowering deaths due to cancer and heart disease, which represent the leading causes of mortality among older adults. Before concluding, we use the American Community Survey (ACS) and the National Health Interview Survey (NHIS) to explore mechanisms that might explain the documented relationship between college education and mortality. We examine the causal effect of college completion on auxiliary outcomes such as health insurance and wages, as well as the cross-sectional relationship between college completion and various health behaviors such as smoking, exercise, and obesity.

The findings in this paper have important implications for both health and education policy. Given that people value health, the health returns to education may represent a substantial fraction of the pecuniary returns. Indeed, Cutler and Lleras-Muney (2010) calculate that their estimates of the health benefits from education increase the total returns to education by 15 to 55 percent. Given that higher education policy in recent years has been focused on increasing college completion, this represents a particularly important margin of analysis.<sup>1</sup> If individual investments in college education are suboptimal because of credit constraints, externalities, or lack of information, the presence of additional health returns to college provides an even stronger case for subsidizing education. This is particularly relevant for recent discussions about the rising cost of college and the decline in federal financial aid for college students. On the other hand, a positive causal impact of higher education on health may pose a dilemma for health policy. Health improvements, like smoking cessation, may reduce health care costs in the short run only to increase them in the long run as individuals live longer or as other unforeseen consequences arise (Bearman, et al., 2011). Our analysis will help inform policymakers interested in the link between education policy and national healthcare spending.

---

<sup>1</sup> Increasing college completion rates is a stated goal of the Obama-Biden administration. They have pushed for higher college completion rates on several fronts: by expanding Pell Grant access, proposing grants to state post-secondary systems, and devising action plans for states (Office of the Vice President, 2011).

This paper also helps to fill an important gap in the literature on the relationship between education and health. Previous analyses of the causal impacts of education on health outcomes, such as mortality, have relied on variation at the lower part of the schooling distribution. For example, Lleras-Muney (2005), Clark and Royer (2010), and Meghir et al. (2012) all exploit changes in compulsory schooling requirements to examine whether increased schooling improved the health of students on the margin of dropping out before 12<sup>th</sup> grade. Lleras-Muney (2005) finds large and significant effects of increased education on declines in mortality in the United States, whereas Clark and Royer (2010) find no evidence for an impact of education on mortality in England.<sup>2</sup> Meghir et al. (2012) find temporary improvements in mortality and other health measures for affected cohorts following a reform in Sweden. However, regardless of the causal impact of schooling on health at the margin of dropping out of high school, the causal relationship may be different at the margin between high school and college. Moreover, estimating the effect of education on health at the college margin may be of particular interest given that the largest increase in educational attainment in recent years have occurred among students entering college (Turner, 2004).

The effect of postsecondary education on certain health behaviors—smoking in particular—has been examined previously. De Walque (2007) and Grimard and Parent (2007) exploit year-to-year variation in induction risk faced by cohorts of young men during the Vietnam War to identify the impact of education on smoking. Using different datasets (NHIS and the CPS Tobacco Supplements, respectively) and different specifications, they find that additional education has a negative and significant effect on the likelihood of smoking.<sup>3</sup> Our paper extends this identification strategy by incorporating within-cohort variation in induction risk to account for

---

<sup>2</sup> Arendt (2005) and Albouy and Lequien (2009) also find no statistically significant impact of compulsory school reforms on health outcomes in Denmark and France, respectively, but in both studies the estimated effects have large standard errors.

<sup>3</sup> MacInnis (2006) uses a similar identification strategy to document the effect of education in reducing obesity and its co-morbidities such as hypertension and adult-onset diabetes.

veteran status. Moreover, we examine a wide range of both health outcomes and behaviors across multiple decades, providing a much broader picture of higher education’s potential health impacts.

Finally, this paper contributes to research examining the impact of military service during the Vietnam War on health outcomes and behaviors (Angrist, Chen, and Frandsen, 2009; Dobkin and Shabani, 2007; Conley and Heerwig, 2009; Hearst, Newman, and Hulley, 1986). These studies all exploit variation in veteran status induced by the Vietnam draft lottery, and none reject the hypothesis that the impact of veteran status on health outcomes is zero.<sup>4</sup> We find a negative effect of veteran status on mortality; as we explain later, our results might not be directly comparable to these studies because we use a different identification strategy, which likely results in a different local average treatment effect. Nevertheless, our results also help to shed light on the relationship between veteran status and health.

## **II. Background on the Vietnam Draft**

Our instrumental variables strategy exploits variation in the risk of induction (also referred to colloquially as the risk of “being drafted”) to which young men in the US were exposed during the Vietnam conflict. This section provides a brief overview of the sources of this variation. A more detailed discussion can be found in Malamud and Wozniak (forthcoming); hereafter MW.

---

<sup>4</sup> Angrist, Chen, and Frandsen (2009) find no significant effect on work-limiting disability in the 2000 US Census, although some increase in non-work-limiting disability rates for whites. In a very similar study using Australian data, Siminski and Ville (2011) find no effect of Vietnam era service on later health. Dobkin and Shabani (2007) fail to find any precise 2SLS estimates on self-reported health and other health outcomes using the NHIS data. Conley and Heerwig (2009) find no significant effect of veteran status on mortality using Vital Statistics data from 1989-2000 in contrast to Hearst, Newman, and Hulley (1986) who show a short-term increase in mortality. Gade and Wenger (2011) find no significant impact of exposure to general combat on mental health status for Vietnam and Gulf War veterans; however, they do not use the lottery as a source of exogenous variation for identification. In the context of WWII, Bedard and Deschênes (2006) find that veteran status increased mortality and attribute much of this increase to smoking induced by the military’s policy of providing subsidized cigarettes at that time.



Approximately 2 million American men were drafted during the Vietnam War. The Selective Service System, which comprised over 4,000 local draft boards across the nation at that time, was responsible for registering recruits and classifying them for either deferment or selection. Responsibility for devising and meeting the national target number of conscriptions rested with the federal Department of Defense (DoD). To achieve this target, the DoD issued monthly “draft calls” that divided the national number into quotas assigned to state draft boards, which did the active work of ordering men to be inducted.

Faced with an excess supply of eligible draft age men, draft boards adopted generous deferral policies toward large categories of men. Enrollment in a four-year college was the second most common deferral category, after the exemption for dependents (Semiannual Reports of the Director of the Selective Service System, 1967-1973).<sup>5</sup> The Military Service Act of 1967 codified the existing de facto arrangement by stating that college students in good standing could defer induction until receipt of an undergraduate degree or age 24, whichever occurred first. Over 1.7 million college deferments were granted in 1967 alone.<sup>6</sup> Although men who received college deferments were technically eligible for induction until age 35, very few men between the ages of 26 and 35 were ever drafted. Card and Lemieux (2000) estimate that, among men born between 1945 and 1947, those with a college degree were only one-third as likely to serve in Vietnam as compared to those without a college degree. Thus, the incentive to enroll in college to avoid the draft during these years was large.

Our identification strategy relies on two sources of variation in induction risk: over time and across states. The existence of intertemporal variation is well-known (Card and Lemieux 2000) and has been used in previous research (e.g., De

---

<sup>5</sup> See also Tatum and Tuchinsky, *Guide to the Draft*, Ch. 3. By contrast, enrollment in a two-year college was not considered grounds for automatic deferment. See Rothenberg (1968).

<sup>6</sup> The number of college deferments remained above 1.7 million in 1968 and 1969, and then fell to 1.5 million and 1.3 million in 1970 and 1971 respectively (Semi-annual Reports of the Director of the Selective Service System, 1967-1973).

Walque, 2007; Grimard and Parent, 2007). Inductions varied considerably over the course of the Vietnam War. From 1960 to 1963, inductions were fairly low at approximately 8,000 per month. However, following the Gulf of Tonkin incident in August 2, 1964, Congress authorized an expanded role for the U.S. military in Vietnam. Inductions more than doubled from 1964 to 1965 and again from 1965 to 1966. By the spring of 1968, in the midst of raging student protests, the rate of inductions reached a peak of almost 42,000 a month.

The introduction of the draft lottery in 1969 led to a substantial change in the induction process. However, college deferments continued to be issued until September 1971, and men who were already enrolled were allowed to retain their deferment until the end of the school year. Risk of induction during this period was also much lower since men were at risk of induction for only a single year and the overall rate of inductions was substantially lower, falling from about 20,000 per month in late 1969 to 2,000 per month in late 1971. In February of 1973, the draft was suspended and no more inductions took place.

The existence of state level variation in induction risk was less well known at the time, and remains so today. This type of variation arose through two channels. The first was uneven and idiosyncratic application of formal procedures across the thousands of local draft boards.<sup>7</sup> In their influential study of the draft, Davis and Dolbear write, “The conclusion seems inescapable: local board autonomy implies both within state and between state variability, even among socioeconomically similar board jurisdictions.”<sup>8</sup> Similar idiosyncrasies were described in the report of the U.S. National Advisory Commission on Selective Service, in 1967. A second source of state and year variation in induction risk were communication delays between federal, state, and local officials. These delays meant that the DoD assigned quotas using registrant numbers that were several months old. Thus, draft risk for an eligible man at a point in time was not only a function of the number of men in his

---

<sup>7</sup> Davis and Dolbear, *Little Groups of Neighbors*, Page 18.

<sup>8</sup> Davis and Dolbear, *Little Groups of Neighbors*, Page 84.

state currently eligible for the draft but also of the number available several months ago. The current pool could be much larger than the past pool if, for example, a large number of local men graduated high school thus becoming draft eligible or much smaller if a large number married or aged out of the draft pool in the intervening months.

### III. Empirical Strategy

We use variation in college attainment caused by draft-avoidance behavior during the Vietnam conflict to isolate the causal effect of education on health. An artifact of this identification strategy is that the likelihood an individual is a veteran also varies systematically across cohorts in our sample. Given that veteran status is a plausible determinant of health, it is important to control for this variable in our estimation strategy.<sup>9</sup> However, selection into military service during the Vietnam War was likely based on characteristics that are unobserved in our data, which would confound our estimates of veteran status and potentially other covariates as well. To deal with this, we exploit changes in both national and state-level induction risk to generate exogenous variation in both college-going and veteran status.<sup>10</sup>

This strategy is identical to the one described in MW. However, we extend the MW analysis in two ways. First, we provide a more detailed discussion of the roles of direct and indirect effects in the system that we study. This is particularly important in the context of health, since direct and indirect channels have received substantial attention from health statisticians – and some attention from economists – trying to understand the causal pathways to health. Second, we experiment with a

---

<sup>9</sup> As noted above, the literature on this question is mixed but tends to find no causal relationship between veteran status and later health among Vietnam veterans. Nevertheless, because veteran status will be affected by our instrumental variables for educational attainment, we think it is important to control for it.

<sup>10</sup> A number of related papers face the same problem. De Walque (2007) includes veteran status but treats it as an exogenous variable. MacInnis (2006) instruments for veteran status using a quartic polynomial in age, while Grimard and Parent (2007) consider a specification that instruments for veteran status using information about early health problems.

variety of first stage specifications in order to demonstrate that our results are robust to alternative specifications of our estimating equations. This is especially relevant here because there has been some controversy about alternative specifications in identifying the impact of education on health (Lleras-Muney, 2005; Mazumder, 2008).

### A. A Structural Model with Direct and Indirect Effects

We begin by presenting a simple structural model that relates the direct and indirect effects of veteran status and college-going on health. Ignoring other covariates for conciseness, our model is the following:

$$(1) \text{ health}_{sc} = \alpha_0 + \alpha_1 \text{ vet}_{sc} + \alpha_2 \text{ educ}_{sc} + \varepsilon_{sc}^h$$

$$(2) \text{ vet}_{sc} = \beta_0 + \beta_1 \text{ educ}_{sc} + \varepsilon_{sc}^v$$

$$(3) \text{ educ}_{sc} = \gamma_0 + \gamma_1 \text{ vet}_{sc} + \varepsilon_{sc}^e$$

where  $s$  and  $c$  refer to birth state and birth cohort respectively. We omit individual subscripts because our source of exogenous variation occurs at the birth state-birth cohort level, and we estimate our specifications using data aggregated accordingly. In this system,  $\alpha_1$  and  $\alpha_2$  are the direct effects of *veteran status* on *health* and *education* on *health*, respectively. However, because of the possible relationships between education and veteran status, a change in either veteran status or schooling may have both a direct effect through the structural parameter in (1) and an indirect effect through its influence on the other variable in either (2) or (3).

In the context of our Vietnam-era setting, we assume that  $\beta_1$  is equal to zero. In other words, we assume that education only has a direct effect on health. Although college students could delay, and eventually avoid, conscription by staying in school (indeed, this is a key component of our identification strategy), the overall induction rates for a particular birth state-birth cohort were unlikely to be affected by draft-avoidance behavior. This is because local draft boards needed to fulfill specific manpower requirements set by the Department of Defense. So if a certain individual avoided the draft, someone else from his state-cohort would need to be drafted

instead. Thus, to a first approximation, rates of veteran status at the state-year cohort level were unaffected by college-going decisions.

On the other hand,  $\gamma_1$  is not equal to zero. Recent work by Angrist and Chen (2011) indicates that veterans were more likely to attend college than non-veterans, primarily as a result of the educational benefits conferred to them by the GI Bill. If we substitute (3) into (1), we can derive an expression for the total effect of veteran status on health:

$$(4) \text{ health}_{sc} = (\alpha_0 + \alpha_2\gamma_0) + (\alpha_1 + \alpha_2\gamma_1)\text{vet}_{sc} + \alpha_2\varepsilon_{sc}^e + \varepsilon_{sc}^h$$

Thus, the total effect of veteran status on health is the sum of the direct effect,  $\alpha_1$ , and the indirect effect,  $\alpha_2\gamma_1$ . Exogenous variation in veteran status, such as the Vietnam draft lottery used in Angrist and Chen (2011), would yield an unbiased estimate of the total effect,  $(\alpha_1 + \alpha_2\gamma_1)$ , of veteran status on health in (4). However, without additional assumptions, estimates of the direct effects of veteran status and college in (1) may be biased.<sup>11</sup>

To summarize, our system contains one causal factor (education) that has a *direct effect* on health and another causal factor (veteran status) that has both direct and indirect effects. The labels “direct” and “indirect” refer to pathways within the specified system. It is straightforward to use random assignment to identify the direct causal effect of education on health because it only operates through a direct pathway within the specified system (Pearl 2005; Mealli and Rubin 2003). For veteran status, there are two causal pathways in the model, and the situation is more complicated. While the total effect is identified, the direct and indirect effects are not separately identified without further assumptions, even with random assignment of all causal factors in the model (Robins and Greenland 1992).

We expect that the effect of education on health operates through mechanisms such as increased income and earnings potential, improved access to

---

<sup>11</sup> This is analogous to the potential bias associated with controlling for a post-treatment variable (Rosenbaum, 1984). A derivation of this bias in the context of an earnings equation where the measure of ability is affected by schooling can be found in Appendix 1 of Angrist and Krueger (1999).

health insurance, and health behaviors. While these and other variables might mediate the relationship between education and health, they still represent a causal pathway from education to health. Therefore,  $\alpha_2$  represents the total effect of education on health through any direct or indirect causal pathways unrelated to veteran status. We explore possible mechanisms through which education may operate in the final sections of this paper but we do not estimate separate contributions of the various mechanisms in the context of a structural model.

We conclude that exogenous variation in both education and veteran status allows us to identify the causal impact of education on health but not necessarily the direct causal impact of veteran status – at least not without further functional form assumptions. Our estimates on veteran status should therefore be viewed conservatively as reflecting both direct and indirect effects of veteran status, with the latter operating through increased educational attainment made possible by the GI Bill. We will therefore refrain from interpreting our estimates of the impact of veteran status as direct causal impacts of veteran status. In comparing our estimates of the impact of veteran status to others in the literature, it is also important to keep in mind that different instruments operate on different segments of the population. The possibility of heterogeneous treatment effects makes it difficult to directly compare IV estimates across studies that use different instruments.

## **B. Identification**

To provide identification for estimating the direct causal effect of college on health, we employ the same strategy as MW, who in turn extend an instrumental variables strategy inspired by Card and Lemieux (2000, 2001); henceforth CL. Like CL, we assume that draft avoidance was proportional to the risk of induction. To account for the mechanical relationship between inductions and veteran status, we exploit state level variation within the cohort level variation identified by CL. The existence of state-cohort level variation allows us to break national induction risk into its constituent parts and obtain two separate instruments that can be used to

identify both college attainment and veteran status. Thus, young men faced state cohort risk that is analogous to the CL measure, where  $s$  indexes state of residence and  $c$  indexes one-year birth cohorts:

$$(5) \quad \text{state cohort risk}_{sc} = \frac{\left(\sum_{t|c=19 \text{ to } 22} I_{sct}\right) / 4}{N_{sc}}$$

$I_{sct}$  is the number of inductions from birth state–birth year cohort  $sc$  in year  $t$ .

Averaging induction totals over the years a cohort was aged 19 to 22 accounts for the fact that men were at risk of induction for several years under the draft board system.  $N_{sc}$  is the birth state-cohort size. This measure of state cohort risk is our first instrument. We then use our state level data on  $I$  and  $N$  to construct a second instrument in the following manner:

$$(6) \quad \text{national cohort risk}_{sc} = \frac{\left(\sum_{t|c=19 \text{ to } 22} \sum_{-s} I_{-sct}\right) / 4}{\sum_{-s} N_{-sc}}$$

This measure defines national cohort risk for a man born in state  $s$  and in birth cohort  $c$  as the number of inductees from all other states,  $-s$ , and birth cohort  $c$ , divided by the total number of such men at age 17.<sup>12</sup> In other words, the numerator and denominator in (6) are national level inductions and cohort size for a cohort  $c$  minus the birth state inductions and cohort size for the same cohort, respectively.

To construct the measures in equations (5) and (6), we obtained data on the number of inductees from 1961 to 1972 in each state from reports of the Selective Service. We estimate state cohort size using enrollment numbers spanning 1959 to 1970, the academic years in which our cohorts of interest were in 11<sup>th</sup> grade. Thus state-cohort level risk (henceforth state risk) for a young man born in Alabama in 1950 equals the number of inductees from Alabama in 1969 (the year he turned 19) divided by the number of students enrolled in 11<sup>th</sup> grade in Alabama in 1967.

---

<sup>12</sup> Note that MW use variation at the six month birth cohort level. Here we use yearly variation because month of birth is not available in the public use mortality data.

National level risk for the same young man roughly equals the number of men inducted nationally in 1969 divided by the size of his birth cohort; more precisely, we subtract own state inductions from the numerator and own state cohort size from the denominator. Like CL, we construct an average draft risk for the years a man was 19 to 22 since draft risk was non-trivial for men ages 20 to 22.

Figure 1 graphs the variation in state-level induction risk for a selection of states over our period of interest. Panel A shows raw induction risk as defined in (5) while Panel B shows residual induction risk after controlling for a cohort trend, state-of-birth fixed effects, and national risk. Given that we include these controls in our main empirical specifications, the patterns in Panel B more closely approximate our identifying variation.<sup>13</sup>

### **C. Validity of Our Instruments**

Given the novelty of our identification strategy, some of the IV assumptions bear more discussion. Our instruments could fail if young men attempted to exploit local variation in induction risk by moving between localities. In this case, risk would not be truly randomly assigned. Our risk measures would only bind for men who were unwilling or unable to move to low risk jurisdictions, which might in turn be correlated with other unobservable characteristics related to health. MW document that this type of “local board shopping” was prohibited by draft board regulations.

Identification further requires the assumption that induction risk only affected health through either education or veteran status. There are two ways in which this might fail. First, the health screenings required to determine draft eligibility might uncover an important health condition earlier than it might otherwise have been detected, thereby encouraging individuals to treat the condition and improving future health. Our reading of the historical literature suggests that this was unlikely. The required exams were very standard and did not involve any

---

<sup>13</sup> For a more detailed discussion of the variation in residual induction risk seen in Figure 1, see MW.



invasive testing for health conditions not easily observed in a doctor's office. It is therefore unlikely these exams provided young men with information they did not already have.<sup>14</sup>

Second, young men may have viewed marriage or fertility choices as a means to reduce their chances of being drafted, and these choices may have connections to health. Marriage was not in itself grounds for deferment (Shapiro and Striker, 1970). Fatherhood, on the other hand, was grounds for deferment and was the most common draft exemption. However, there is little evidence that male fertility among affected cohorts responded to this. Bitler and Schmidt (2012) examine fertility changes among women who were likely to have been affected by the absence of men in affected cohorts. Their findings indicate that men in our affected cohorts were modestly but statistically significantly less likely to become fathers during the Vietnam years. Whether there is an effect on completed fertility is unknown. Nevertheless, we know of no evidence linking fertility timing to later adult health for men. Since the known effects (for women) are small, and since there is no known channel to link any potential effects for men to health, we conclude that the exclusion restriction is valid in our context.<sup>15</sup> Finally, MW provide a detailed discussion of how the monotonicity condition is met.

#### **IV. Data Sources and Empirical Specification**

We focus on mortality as our measure of health. We perform our main analysis on data aggregated to the birth state-birth year cohort level, and we refer to

---

<sup>14</sup> In fact, Tatum and Tuchinsky describe the exams this way, "Since the [Army] examines large numbers of men each day, and since the doctors, orderlies, and clerks assigned there must process them in assembly-line fashion as quickly as possible, the examinations are often careless. If you have a medical or other condition which should disqualify you, bring letters and other evidence from your own doctors..." (Ch. 6). A 1964 report to the president noted that "The current published medical standards are roughly the same as those which were in effect at the close of World War II," (U.S. Department of Health, Education, and Welfare, 1964, Ch. 3).

<sup>15</sup> Also, fertility effects were largest among blacks and low skilled whites (Bitler and Schmidt, 2012). Since we omit blacks from our sample, this further reduces concerns about fertility changes in young adulthood driving later health for men.

these cells as birth state-cohorts. Our main measure of mortality at the birth state-cohort level is the cumulative mortality rate per 1000 persons between 1981 and 2007, constructed as follows:

$$(7) \quad MR_{sc} = \frac{\text{deaths}_{sc} \text{ between 1981 and 2007}}{\text{cohort size}_{sc}^{1980}} * 1,000$$

where  $s$  is state of birth and  $c$  is year of birth. Thus the mortality rate gives the probability of dying by 2007, conditional on being alive in 1980. We also construct cumulative mortality rates by cause. These are defined as above, but where  $MR_{sc}^j$  is mortality due to cause  $j$ , and the numerator is all deaths due to cause  $j$  over the period.

The data for our analysis come from two sources. First, we use data from the IPUMS microdata 5% samples of the 1980 Census (Ruggles et al., 2004) to construct the denominators in the mortality rate measures as well as the birth state-cohort rates of college completion and veteran status. We restrict our sample to men born between 1942 and 1953, following MW. These are the years for which both inductions and enrollments are available at the state level, which are the two components of our induction risk measures. Finally, we omit non-white men from our sample because they may have been less able to avoid the draft by enrolling in college.<sup>16</sup>

Our second source is the Vital Statistics mortality data for the period 1981 to 2007, which contains observations on all deaths in the United States, at the annual level. We use these data to construct the numerators in our mortality rate measures, after applying the same sample restrictions applied to the Census data. We match numbers of deaths to the appropriate state-cohort information using year and state of birth. We also have information on the primary (or underlying) cause of death, and we use this to construct cause-specific mortality rates.

Our primary measure of educational attainment is a dummy variable for

---

<sup>16</sup> MW discusses this possibility in more detail.

college completion. To inform this choice, we explored the impact of our instruments on educational attainment and confirmed that higher national and state-level induction risk increased male educational attainment at all post-secondary levels, including completion. We also experimented with alternative specifications using years of schooling and years of college as our measure of educational attainment. The substance of our conclusions appears robust to the choice of education measure.<sup>17</sup>

Our measure of veteran status is based on veteran information in the Census. Specifically, we define a veteran in our cohorts as someone who answered affirmatively that he was a Vietnam veteran.<sup>18</sup> We exclude anyone from our sample that is on active duty in the military. We also exclude observations with imputed values for a number of key variables.<sup>19</sup>

We estimate our main regressions at the birth state by birth cohort level. We use the aggregated data for several reasons. First, our source of exogenous variation occurs at this level. Second, since we cannot observe veteran status, education, and mortality for a representative set of individuals in a single data set, it allows for construction of a birth state-cohort panel from which we can estimate our main econometric model. Finally, an individual's risk of death in a given year is low, so the fit of our model is likely better at the aggregate level than in a model estimating rare outcomes in individual level data. Our main econometric model as follows:

$$(8) MR_{sc} = \lambda' X_{sc} + a_1 vet_{sc} + a_2 educ_{sc} + \tau trend_{sc} + \delta_s + \epsilon_{sc}$$

---

<sup>17</sup> College completion has been shown to be the most accurately measured higher education outcome and to contain little measurement error overall (Black, et al., 2003). On the other hand, years of post-secondary schooling is unlikely to be plagued by error that is negatively correlated with the recorded value, as is the case with the dummy variable schooling measures (Kane, Rouse, and Staiger, 1999, and Black, et al., 2000).

<sup>18</sup> Census respondents are asked whether they are veterans, and if they answer yes, they are asked to identify a specific period of conflict. A small number of men in our cohorts report that they are veterans but not Vietnam veterans. For 1990, we define Reservists or National Guard members as non-veterans to match the veteran definition in the 1980 and 2000 Censuses. We also omit those living in group quarters.

<sup>19</sup> Specifically, we drop observations with imputed values for age, education, birth place, and veteran status.

where  $s$  indexes state of birth and  $c$  indexes birth year, and the dependent variable  $MR_{sc}$  is the mortality rate per 1,000 persons as defined in (7)—either in total or by cause. The variable  $vet$  is the fraction of veterans, and  $educ$  is the fraction with a college degree. In addition,  $trend$  is a region-specific linear trend in birth cohort,  $X$  is a set of state-cohort level controls, and  $\delta$  represents a full set of state of birth dummies. Allowing for state of birth fixed effects removes variation arising from states with persistently higher or lower than average induction rates, which may be associated with other state characteristics (e.g. industrial composition) that are correlated with mortality rates.  $X$  includes two variables to capture labor market conditions facing a cohort at the time of the college enrollment decision: (a) the employment to population ratio in the individual’s state of birth the year his cohort turned 19, and (b) the log of the number of respondents from a birth state and year cohort in the 1960 Census. Together, these approximate the changes in labor demand and labor supply which may have occurred alongside changes in state-level induction risk.<sup>20</sup>

Our endogenous variables,  $educ$  and  $vet$ , are predicted from first stage equations that include the remaining right hand side covariates in Equation (8) plus functions of  $staterisk_s$  and  $nationalrisk_s$  as defined in (5) and (6), respectively. Our main results show estimates from three different first stage specifications. In the first,  $staterisk$  and  $nationalrisk$  are entered linearly. The second and third specifications include quadratic and cubic functions of both risk measures, respectively. In results not shown, our inspection of the relationship between our identifying state risk variation and our covariates of interest (veteran status and college completion) suggests that the relationship may be non-linear, in which case including higher order

---

<sup>20</sup> The literature tends to find no consistent, significant relationship between local labor market conditions and college attendance (Wozniak, 2010; Card and Lemieux, 2001b). However, early labor market conditions affect longer-run labor market outcomes (Wozniak, 2010; Kahn, 2010; Oreopoulos, et al., 2012) and labor market outcomes have been linked to later adult health (Sullivan and von Wachter, 2009). We do not include fertility and marriage rates as controls since these may be endogenous to education and may therefore interfere with identification of education’s total effect on mortality.

risk terms is appropriate. Estimation is done via standard linear 2SLS as well as LIML for the higher order specifications, weighted by the number of observations in each state-cohort cell.<sup>21</sup> We follow Bertrand et al. (2004) and cluster standard errors at the birth state level after collapsing our data to birth state-cohort cells.<sup>22</sup>

Descriptive statistics are shown in Table 1, which summarizes the variables used in our analysis for the sample of white men born between 1942 and 1953. The average cumulative mortality rate per 1,000 persons as defined in (7) is 138.58. Table 1 also gives mortality rates by cause-of-death for ten important causes for these cohorts, in order of prevalence. The most common causes of death were cancers (36.5 per 1,000 white men) and heart disease (35.7/1,000). External causes (accidental injury, suicide, and homicide) accounted for 23.0 deaths per 1,000 men. Figure 2 shows the fraction of deaths attributable to common causes by age for our cohorts. For younger men, external causes like accidental injury and suicide are the leading causes of death, but by their forties cancer and heart disease are the leading causes.

## V. Results

### A. First stage results

Table 2 presents results from estimating the first stage, with linear, quadratic, and cubic specifications of the risk measures. For transparency, we estimate two separate first stage equations for each specification—predicting college graduation and veteran status separately—although 2SLS estimates these equations jointly. Consistent with the manner in which 2SLS identifies endogenous variables, both equations include national and state cohort risk as identifying variables. The F-

---

<sup>21</sup> See Wooldridge (2002) pp. 622-624 concerning 2SLS versus an approach with a probit first stage when the endogenous variable is a dummy variable. In some cases, the latter is more efficient but may tend to produce larger point estimates. Given our concerns about possible upward bias, we implement 2SLS estimation.

<sup>22</sup> Because our mortality measures combine Census data with data on the universe of mortality outcomes, we do not further correct our standard errors to account for multiple data sources, as for example, in two-sample IV.

statistics are from tests of the null hypothesis that the induction risk variables are jointly insignificant and are calculated according to the (corrected) Angrist and Pischke (2009) procedure.

The first two columns show results from the linear specification. A 10 percentage point increase in national cohort risk (roughly the entire range of this variable) increased the percent with a college degree by 9.4 percentage points. In other words, cohorts with higher national risk were more likely to graduate college.<sup>23</sup> Coefficients from the quadratic and cubic specifications also indicate an overall positive relationship between higher national risk and college graduation over the range of the risk variable. On the other hand, college graduation is negatively related to state cohort risk when national induction risk is included, particularly in the linear and quadratic specifications. As discussed in MW, this may be an artifact of the high correlation (collinearity) between national and state level risk. Across specifications, the F-statistics suggest that this first stage has substantial power.

The first stage estimates with veteran status as the dependent variable show that veteran status positively varies with both national and state cohort risk, and the F-statistics are large. This is reassuring since higher rates of induction risk at both the state and national level should lead more young men to go to war. We interpret the fact that the coefficient on national risk exceeds that of state risk in the veteran equation to mean that the time series variation in draft risk generated by the massive fluctuation in military manpower demands is responsible for more of the variation in veteran status than are the differences in induction risk across states.

## **B. OLS and 2SLS effects of college education on total mortality**

Table 3 presents our OLS and 2SLS estimates of the effect of college graduation on cumulative mortality (Equation 8). For the IV results, we show specifications in which the induction risk variables are linear, quadratic, and cubic.

---

<sup>23</sup> The comparable estimate from Table 1 in Card and Lemieux (2001) shows a 4.6 percentage point increase. Our estimate is larger because we restrict the sample to whites. When we do not make this restriction, our estimates are very close to those in Card and Lemieux.

For the quadratic and cubic specifications the model is over-identified, so we can estimate the model using both 2SLS and limited-information maximum likelihood (LIML). We do this to further investigate the validity of our instruments—LIML is less precise than 2SLS but is also less biased in the presence of confounding variables. If the coefficients from the two approaches are similar, this is evidence that 2SLS is unbiased (Angrist and Pischke 2009).

The OLS coefficient for college graduation is -101.97. This indicates that increasing college completion rates from the level of the state with the lowest rates to that with the highest (a 42 percentage point change) is associated with 42.8 fewer deaths per 1,000 men. This is consistent with the well-documented educational gradient in most health outcomes. Veteran status is also negatively associated with mortality for these cohorts, but it is less clear what we should expect for the sign on this coefficient, even in our OLS estimates. There are two reasons for this. First, we observe mortality conditional on surviving to 1980. Veteran status may increase mortality at young ages, both via combat injuries and death but also through risky behavior (Hearst, et al., 1986). Less is known about the relationship between veteran status and health in the longer term, and the existing studies find mixed evidence, as noted above. Second, our use of aggregate data limits the variation we use to estimate the OLS gradient and may result in a sign that differs between microdata and aggregate data. Specifically, our OLS results only use variation across birth state-birth year cohorts to estimate the coefficient on veteran status, while microdata estimates of the same OLS equation also use within-state and within-cohort variation to estimate the veteran coefficient.<sup>24</sup>

Table 3, Column [2] shows the point estimates of the causal effect of college graduation and veteran status on mortality using a linear specification for the

---

<sup>24</sup> Given the nature of our constructed mortality rate data, we cannot re-estimate our main equations using microdata to examine whether the level of aggregation affects our OLS estimates. However, in Section VI we report estimates of the effects of education and veteran status on insurance outcomes that allow us to compare across micro- and aggregate data.

instruments. The results are remarkably similar to the OLS estimates, though they are less precise. With the quadratic specification, the estimated effect of college graduation is substantially larger and is statistically significant; with the cubic specification the point estimates are again very close to OLS and are statistically significant. In columns [3] through [6], the 2SLS and LIML results are nearly identical, further supporting our identification strategy. Taken together, the 2SLS results imply a large causal role for both college graduation and veteran status in reducing cumulative mortality for these cohorts. For the linear and cubic specifications, IV results are very similar to OLS.

One might wonder whether the effect of education on mortality changes over time, since the causes of death vary considerably over the period (as Figure 2 shows). In Table 4, we show OLS and IV estimates for the effect of college completion rates on mortality by decade. In these and all remaining results, we show results for the cubic 2SLS specification only.<sup>25</sup> For each decade, this measure is the total number of deaths over the decade (1981-1990, 1991-2000, 2001-2007) divided by the cohort size in the beginning of the decade (taken from the 1980, 1990, and 2000 Censuses, respectively). These shorter-term mortality rates allow us to determine whether the role of education changes as the likely reasons for mortality evolve.<sup>26</sup>

For each decade, college graduation and veteran status are negatively associated with mortality. For the 1980s (where the first stage is strongest), IV results

---

<sup>25</sup> We choose to show the cubic specification because the estimates are generally more precise, but results using lower order polynomial functional forms for the first stage equations are qualitatively similar. De Walque (2007) uses a non-linear specification of induction risk to instrument for both education and veteran status. The 2SLS and LIML results for decadal mortality are similar using the cubic functional form (though more so for 1980 and 2000 than for 1990), which again suggests that 2SLS using this specification is unbiased.

<sup>26</sup> Ideally, we would construct mortality rates by age, rather than by decade (for example, rates for men in their forties). However, to construct the denominators for the mortality rates, we would need to know the number alive at certain ages, by birth state. We would also need the average education level and veteran status for the cell. These cannot be constructed from the Census since it is only conducted every 10 years, and the SEER population counts are not available by state of birth and do not have information on education and veteran status.



are again very similar to OLS. The estimated effect of increased college attainment on mortality during the 1980s is -24.38; increasing college education from the level of the least educated birth state-cohort to the highest would decrease mortality by 10.2 per 1,000 men (or 40% relative to the mean). For the 1990s and 2000s, the IV estimates are larger than the OLS estimates and indicate that moving from the lowest-education birth state-cohort to the highest would decrease mortality by 61% and 57% relative to the mean, respectively. Results for these decades are also less precise, however, which may be driven by the weaker first stage for college graduation (first-stage F-statistics are reported in the table). So while we interpret these results with caution, there is little evidence that the negative effect of college education on total mortality is confined to a particular decade. Veteran status has a negative and statistically significant negative effect on mortality in all periods. In the next section, we consider the effect of college graduation on specific causes of death.

### **C. OLS and 2SLS effects of college education on mortality by cause of death**

Table 5 shows the effect of state-cohort college graduation rates on leading causes of death for men in these cohorts. Causes are shown in descending order of prevalence from 1980 to 2007. OLS results are in Panel A and 2SLS results are in Panel B. Again, all specifications include birth region trends and a control for veteran status. For cancer and heart disease—the two leading causes of death—the point estimates on college graduate are negative and statistically significant for both OLS and IV and are larger for IV. Moving from the lowest-education birth state-cohort to the highest would reduce cancer deaths by 25.9 per 1,000 (71% relative to the mean) and heart disease deaths by 18.9 (42% relative to the mean). The effect of veteran status on mortality due to these causes is also negative, though not statistically significant for heart disease.

In results not shown here, we estimate the model for deaths by specific type of cancer. Lung cancer accounts for nearly one-third of the cancer deaths in our sample; the next leading specific cause is colon cancer, which accounts for about

10% of cancer deaths. The IV estimate of the effect of a college degree on lung cancer is -35.59 (s.e. = 5.09), suggesting that 57% of the decline in total cancer deaths is due to lung cancer. This is greater than the decline that would be observed if college education had an equal effect on deaths from all cancers. That college education has a particularly big effect on death from lung cancer is not surprising, as De Walque (2007) and Grimard and Parent (2007) both find that education has a large and statistically significant negative effect on smoking. Cigarette smoking is known to be a leading cause of death from both lung cancer and cardiovascular (heart) disease (Chaloupka and Warner, 2000).

The next two causes in Table 5 are external: accidental injury and suicide. The OLS results show a negative association between a college degree and death by accidental injury, but the IV coefficient is smaller and statistically insignificant. There is also no evidence that college decreases deaths by suicide. Veteran status, however, does decrease deaths due to these two external causes, conditional on surviving to 1980.

Infectious and parasitic diseases and liver diseases are next, and for both causes the point estimate for college graduate is negative in the OLS specification. But in the 2SLS specifications, the effect is positive and statistically significant. For infectious and parasitic diseases, 78% of deaths for these cohorts were due to HIV alone, and HIV deaths are driving the positive coefficient. There are multiple ways in which college-going might increase one's risk of contracting HIV during this period, including by increasing exposure to homosexual communities, increasing the likelihood of engaging in same-sex relationships, or increasing the likelihood of living in an urban environment.<sup>27</sup> Liver diseases, on the other hand, include cirrhosis which can be caused by excessive alcohol consumption—48% of deaths to cirrhosis

---

<sup>27</sup> About half of all HIV cases in the U.S. are for men who have sex with men (Center for Disease Control 1997). Lambert et al. (2006) find that upper-class college students had more positive attitudes toward gay and lesbians than underclassmen, suggesting that college increases acceptance of homosexuality.

in 2007 were alcohol-related (Yoon and Yi, 2010). If a college degree increases this behavior, graduates may be more at risk for liver diseases.<sup>28</sup> We investigate the relationship between college education and alcohol consumption in the next section. The effect of veteran status on deaths by infectious diseases and liver disease is negative.

For the remaining causes of death—diabetes, stroke, chronic low respiratory conditions (CLRCs), and homicide—the point estimates are negative in both the OLS and IV specifications. A college degree decreases deaths per 1,000 white men from both diabetes and stroke by 7 and from CLRCs by 9. The latter effect is especially large and is also likely related to the effect of college on the likelihood of smoking, since smoking is a known cause of CLRCs like chronic bronchitis and emphysema (Chaloupka and Warner, 2000). There is no statistically significant effect of a college education on deaths by homicide. Veteran status also decreases deaths due to chronic low respiratory conditions. The effect of veteran status on diabetes, stroke, and homicide is small and statistically insignificant at the 5 percent level.

The results in Tables 3, 4, and 5 indicate that college education has a negative effect on total mortality; that the effect was not confined to any particular decade; and that deaths due to heart disease and cancer are particularly affected. A college education has a particularly strong negative effect on deaths from causes related to smoking.

## **VI. Potential Mechanisms**

A number of potential mechanisms might explain the negative effect of college completion on cumulative mortality and the heterogeneity in the effect across specific causes of death. For example, we hypothesize that the college educated are

---

<sup>28</sup> Competing risks may also help explain the positive coefficients seen here (and may affect the magnitude of other coefficients). Since the first two columns in the table indicate that college prevented some men from dying of cancer and heart disease, these men may now be more susceptible to death by other causes (Honoré and Lleras-Muney, 2006).

less likely to smoke and more likely to drink, explaining the negative coefficient on cancer and the positive coefficient on liver disease, respectively. Cutler and Lleras-Muney (2010) describe the health behaviors that mediate the relationship between education and health for a nationally-representative population. In this section, we focus on our cohort in particular and explore whether we can find evidence supporting or refuting potential mechanisms that would explain the cause-of-death mortality results. First, using data from the Census, we examine the causal relationship between education and earnings or wages for our cohort. Second, we assess the impact on access to health insurance in the 2008-2010 American Community Survey (ACS) and 1980 National Health Interview Survey (NHIS) Health Insurance Supplement. Finally, using data from the 1985 National Health Interview Survey (NHIS), Health Promotion and Disease Prevention (HPDP) Supplement, we consider acute health outcomes, including diabetes, hypertension, and BMI, and health behaviors, including smoking, exercise, and alcohol consumption.

#### **A. Earnings and Wages**

An extensive literature demonstrates that increased schooling is causally related to higher wages and earnings (Card, 2001). To the extent that higher income enables individuals to purchase greater health insurance or acquire a healthier lifestyle, it represents an important mechanism in explaining the relationship between education and mortality. Cutler and Lleras-Muney (2010) demonstrate that family income is an important mediating factor between education and health. However, health may directly affect earnings potential, so these results must be interpreted only as suggestive evidence of a possible mechanism. We examine this potential mechanism by estimating the effect of college completion on wages and earnings for cohorts who came of age during the Vietnam War. Using data from the 1980 Census, Table 6 presents OLS, 2SLS, and LIML estimates based on our alternative

first-stage specifications (i.e., linear, quadratic, and cubic as in the main results of Table 3).<sup>29</sup>

In Panel A, which shows results for log earnings, the OLS estimates indicate that college completion is associated with 43.7 percent higher earnings. The 2SLS estimate with a linear first stage specification is small and insignificant. However, the quadratic 2SLS and LIML specifications show that college completion causes a significant increase in earnings of 56 to 58 percent, while the cubic 2SLS and LIML specifications yield even larger effects of 78 to 83 percent higher earnings. The 95 percent confidence intervals on the 2SLS and LIML estimates are sufficiently large as to include the OLS estimate so we cannot reject there is a difference between them (even for the linear 2SLS estimate). In Panel B, which shows results for hourly wages, the OLS estimate indicates that college completion is associated with 23 percent higher wages. The linear and quadratic specifications are insignificant, although the quadratic 2SLS and LIML specifications do reveal point estimates that are, at about 20 percent, similar to the OLS. The cubic specifications yield large and significant impacts of college completion on wages of 39 to 41 percent. As with the earnings results, we cannot reject that any of the IV estimates are significantly different from the OLS estimates.

These findings suggest that wages and earnings may be an important mediating factor in the effect of education on health. Further quantifying the importance of this factor would also require causal estimates for the effect of income on health.

## **B. Health Insurance**

Next we consider the role of health insurance as an additional potential mechanism through which education might reduce mortality. Earning a college

---

<sup>29</sup> We show results here for all specifications because the results can be sensitive to this choice (unlike the results in Tables 4 and 5). All of the regressions are restricted to full-time workers. Hourly wages are further truncated to remove the bottom and top 0.5 percent in order to reduce measurement error.

degree qualifies individuals for jobs that are more likely to include benefits such as employer-provided health insurance (Hipple and Stewart, 1996). Health insurance is associated with better access to preventative care and should lead to better health and lower mortality, all else equal (Miller, 2012). However, those with poorer health or who are at higher risk of needing expensive medical services might be more inclined to purchase health insurance. Here we explore whether college attainment is associated with a higher probability of being covered by health insurance in order to assess whether access to health insurance is a channel through which education might improve health.

Our data on insurance come from the 1980 NHIS Health Insurance Supplement and the 2008-2010 ACS. The 1980 NHIS is chosen because this is the baseline year from our mortality analysis. Estimation using the NHIS data necessitates some changes in our specifications since we cannot observe state of birth or state of residence (but we do observe the Census region of residence) in the public use versions of the NHIS. We therefore estimate our insurance models using individual-level data, rather than data aggregated to the birth state-birth year cohort level. When using NHIS data, we also substitute region-level controls for birth state level controls. Our econometric model for the NHIS data is the following:

$$(9) \textit{insurance}_{irc} = a_1 \textit{vet}_{irc} + a_2 \textit{educ}_{irc} + \tau \textit{trend}_{rc} + \delta_r + \epsilon_{irc}$$

where  $i$  indexes individuals,  $r$  indexes region of residence, and  $c$  indexes birth year. Here the dependent variable is an indicator for either any insurance coverage, private coverage, or public coverage. The variable  $\textit{vet}$  is an indicator for whether the individual is a veteran, and  $\textit{educ}$  is an indicator for whether the individual has a college degree. In addition,  $\textit{trend}$  is a region-specific linear trend in birth cohort, and  $\delta$  represents region of residence dummies. Note that because of the lack of state identifiers in the NHIS, we cannot use the set of state-cohort level controls described above (the employment to population ratio and the cohort size). For the

ACS, we estimate model with the same covariates as in Equation (4) but using individual level rather than aggregated data, for comparability with the NHIS.

We do not present results using instrumental variables with the NHIS data because of power issues. The 1980 Census sample is over 200 times larger than the 1980 wave of the NHIS. Although theoretically one could merge together data from three decades of the NHIS using restricted-access data that includes state of birth, even then the sample size is not sufficient to have a strong first stage.<sup>30</sup> We present results from ordinary least squares regression using the NHIS data, and include both OLS and 2SLS results from the 2008-2010 ACS.

We first explore whether the individual has any health insurance; we then consider private and public health insurance coverage separately. Private health insurance includes both employer-provided health insurance and plans that individuals purchase in the private market. We anticipate that having a college degree is associated with a higher probability of having private health insurance. Our public health insurance measure includes Medicaid, Medicare and disability, and the veteran's health insurance program CHAMPUS. We therefore anticipate that veterans are much more likely to have public health insurance coverage. We expect that both having a college degree and being a veteran are associated with a higher probability of having any health insurance.

The results are reported in Table 7. In the ACS, we find that having a college degree is associated with a 6.1 percentage point higher probability of having any health insurance, which is about 6.6 percent of the mean of 92.4 percent. The instrumental variables estimates in the second column suggest that a college degree increases the probability of having health insurance by an even larger margin of 15.6 percentage points. Next, we consider private coverage. While the coefficient on college graduate is only significant in the OLS specification, the magnitude is similar in both the OLS and IV and suggests that being a college graduate is associated with

---

<sup>30</sup> Results using pooled data from the 1997-2009 NHIS are available upon request, but show a weak first-stage and no statistically significant coefficients in 2SLS.

a 15 percentage point higher probability of having private health insurance coverage. Finally, we see that, if anything, college graduates are less likely to have public coverage than non-college graduates, while being a veteran leads to a 27 percentage point increase in the probability of having public health insurance coverage.<sup>31</sup> Note that in the ACS individuals can be classified as having both private and public health insurance.

Results from the NHIS are in the bottom half of Table 7. We see that the OLS estimates using the 1980 NHIS are very similar to that found using the more recent ACS data, with the exception of the probability of having public health insurance coverage. We find that being a college graduate is associated with a 9.4 percentage point higher probability of having any health insurance, which is approximately 10 percent of the mean of 89 percent. Similarly, college graduates are 11.1 percentage points more likely to have private health insurance coverage than non-college graduates.

When we consider public health insurance coverage, we see some differences. In the NHIS, individuals can be classified as having public coverage only if they do not have any private health insurance coverage. Those that do not have private insurance or Medicare are asked to state the reason, to which they may respond, among other things, that they receive services through Medicaid, welfare, or CHAMPUS. Only 2 percent of the sample report having any public insurance coverage in the NHIS. The restrictiveness of the definition contributes to the differences between this figure and that in the ACS, where 17.9 percent have public coverage. Our cohort is also younger in 1980, so these men are much less likely to

---

<sup>31</sup> As discussed above, it is possible that OLS estimates using aggregate data differ from those generated using microdata because we expect the effects of our birth state-cohort level identifying variation to be powerful and the aggregate estimates are relatively more influenced by this than the microdata estimates. We find this is the case in the ACS estimates of Table 7, where the OLS equations can be estimated on both micro- and aggregate data. In the (unreported) OLS estimates using aggregate data, veteran status is negatively but insignificantly associated with private coverage. There is little difference in the OLS veteran coefficient on public coverage, or in the IV estimates, across the aggregate and non-aggregated data.



be disabled and qualify for Medicare than they will be at ages 55-64. Indeed, when we look at individuals who are ages 55-64 in 1980 (born between 1916-1925), we see that 11.9 percent have public health insurance coverage, which is much closer to the ACS mean. Although the estimated coefficient on college graduate is much larger in the ACS data, the effect size relative to the sample mean is quite similar between the two datasets. In the NHIS data, we do not see any association between veteran's status and public health insurance coverage, while the effect is positive and significant in the ACS. Taken together, these results confirm that access to health insurance is another potential mechanism through which college attainment could improve health.

### **C. Acute Health Outcomes and Health Behaviors**

Our final set of results considers how acute health conditions and health behaviors are associated with college attainment and veteran status for our cohort of men. Here we use the 1985 NHIS Health Promotion and Disease Prevention (HPDP) Supplement, which allows us to measure outcomes as close to the 1980 baseline year as possible. We again estimate equation (9) at the individual-level, but where the dependent variable is a measure of either a health outcome or a health behavior. We report estimated coefficients on college graduate and veteran status in Table 8, with standard errors clustered by region of residence. We also report the sample size for each specification and the mean of the dependent variable.

We first consider several acute health measures that could help to explain the association between education and mortality. First, we find that college graduates have significantly lower body mass index (BMI) and are significantly less likely to be obese. We find that college graduates are 3.9 percentage points more likely to report having been under a lot of stress in the past two weeks relative to non-college graduates. This result is in contrast to the finding in Table 5 that college graduates are significantly less likely to die from heart disease. However, it may be the case that college graduates are more likely to report being under stress due to cultural

influences rather than to true underlying stress levels. We do not find any relationship between being a college graduate and the probability of missing work or having restricted activity or bed days in the past two weeks.

The bottom half of Table 8 explores a series of health behaviors that Cutler and Lleras-Muney (2010) identify as important mediating factors between education and health. Consistent with prior literature, we find that college graduates are less likely to smoke while veterans are more likely to smoke. Similarly, we see that college graduates are less likely to be heavy drinkers and more likely to exercise. Therefore, we observe that college graduates are exhibiting healthier behaviors than non-college graduates, while veterans are more likely to smoke. Although this is consistent with college graduates having lower mortality rates, it does not help to explain some of the differences in cause-specific mortality reported in Table 5, like liver disease. Health behaviors also cannot explain the protective effect of veteran status on mortality.

## **VII. Conclusion**

This paper examines the causal impact of a college education on adult mortality. We exploit changes in national and state-level risk of induction into military service during the Vietnam conflict as a source of exogenous variation in college completion. Using Census data from 1980 to 2000 and Vital Statistics data from 1981 to 2007, we show that the magnitude of causal impacts of higher cohort college completion rates estimated by 2SLS is quite similar to the OLS gradient. In our cohorts, these estimates indicate that increasing college completion rates from the level of the birth-state with the lowest rate to that with the highest would decrease deaths by about 39 per 1,000 men. This is equivalent to 28% of the mean of total mortality over our period, or a full standard deviation in birth state-cohort mortality. Alternatively, given the fraction of our sample with a college degree, our preferred IV coefficient indicates that mortality rates over the period are about 2.21

times greater for college graduates than for non-college graduates.<sup>32</sup> For comparison, 10-year mortality rates for 50-year old men in the U.S. are 2.6 times higher for smokers than for non-smokers (Woloshin et al. 2008).<sup>33</sup> We also find large negative effects of college completion on cancer and heart disease, the leading causes of mortality among older adults. Thus, increasing college completion rates in the lowest-education birth state-cohort to that of the highest would reduce cancer deaths by 25.9 per 1,000 (71% relative to the mean) and heart disease deaths by 18.9 (42% relative to the mean).

What mechanisms explain the relationship between college education and mortality? We shed some light on this by examining the causal effect of college completion on auxiliary outcomes such as health insurance and earnings, as well as the cross-sectional relationship between college completion and various health behaviors such as smoking, exercise, and obesity. Using data from the Census and the American Community Survey and employing the same IV strategy used to establish the mortality results, we show that increased college completion leads to both higher earnings and higher rates of health insurance. Using data from the National Health Interview Study, we show that college completion is also associated with less smoking, more exercise, and fewer instances of excessive drinking for our cohorts of interest.<sup>34</sup> These results suggest that the impact of college completion on overall mortality may partially operate through the greater financial and health resources, and that the impacts on cancer (especially lung cancer) and heart disease may be partially explained by the differences in behavior between college graduates and non-graduates. Our findings are therefore quite consistent with the arguments in Cutler and Lleras-Muney (2010).

---

<sup>32</sup> To see this, note that with 35% of the sample having a college degree and a mean mortality rate of 138.58, the coefficient implies that mortality rates would be 171.5 for non-college graduates and 77.5 for college graduates.

<sup>33</sup> A study of Norwegian men found that mortality by age 70 (conditional on living to age 40) was 2.9 times higher for smokers than non-smokers (Vollset et al. 2006).

<sup>34</sup> See Cutler and Lleras-Muney (2009) for similar results in the NHIS for a broader set of cohorts.

The findings in this paper indicate that there is a large return to schooling on health at the top part of the education distribution. Given that higher education policy in recent years has been focused on increasing college completion, this represents a particularly important margin of analysis. Of course, whether these findings would point towards education subsidies depends on the presence of market failures, either in the form of externalities, credit constraints, or lack of knowledge about the health benefits of college graduation. To the extent that this paper provides useful information about the benefits of college completion in reducing adult mortality, we hope that it may address one possible source of inefficient investments in human capital.

## References

- Albouy, Valerie, & Lequien, Laurent. 2009. "Does Compulsory Education Lower Mortality?" *Journal of Health Economics*, 28(1): 155-168.
- Angrist, Joshua and Stacey Chen. 2011. "Schooling and the Vietnam Era GI Bill: Evidence from the Draft Lottery," *American Economic Journal: Applied Economics*, 3(2): 96-118.
- Angrist, Joshua, Chen, Stacey, and Brigham Frandsen. 2010. "Did Vietnam Veterans Get Sicker in the 1990s? The Complicated Effects of Military Service on Self-Reported Health," *Journal of Public Economics*, 94 (11-12): 824-837.
- Angrist, Joshua and Kreuger, Alan. 1992. "Estimating the Payoff to Schooling Using the Vietnam-Era Draft Lottery." *NBER Working Paper #4067*.
- Angrist, Joshua and Jorn-Steffen Pischke. 2009. *Mostly Harmless Econometrics: An Empiricist's Companion*. Princeton, New Jersey: Princeton University Press.
- Arendt, Jacob Nielsen. 2005. "Does Education Cause Better Health? A Panel Data Analysis Using School Reforms for Identification." *Economics of Education Review*, 24(2): 149-160.
- Bearman, Peter; Kathryn M. Neckerman; and Leslie Wright. 2011. *After Tobacco: What Would Happen if Americans Stopped Smoking?* New York: Columbia University Press.
- Bedard, Kelly; Deschênes, Olivier. 2006. "The Long-Term Impact of Military Service on Health: Evidence from World War II and Korean War Veterans," *American Economic Review*, 96 (1): 176-194.
- Bertrand, Marianne; Esther Duflo; and Sendhil Mullainathan. 2004. "How Much Should We Trust Difference-in-Differences Estimates?" *Quarterly Journal of Economics*. 119(1): 249-275.
- Bitler, Marianne and Lucie Schmidt. 2012. "Birth Rates and the Vietnam Draft." *American Economic Review Papers and Proceedings*, 102(3): 566-569.
- Black, Dan A.; Mark C. Berger; and Frank A Scott. 2000. "Bounding Parameter Estimates with Nonclassical Measurement Error," *Journal of the American Statistical Association*, Sep 2000, 95(451): 739-738.
- Black, Dan; Seth Sanders; and Lowell Taylor. 2003. "Measurement of Higher Education in the Census and Current Population Survey," *Journal of the American Statistical Association*, Sep 2003, 98 (463): 545-554.

- Card, David, and Lemieux, Thomas. 2000. "Going to College to Avoid the Draft: The Unintended Legacy of the Vietnam War." *Manuscript*. Vancouver, Canada: University of British Columbia (2000).
- Card, David, and Lemieux, Thomas. 2001. "Going to College to Avoid the Draft: The Unintended Legacy of the Vietnam War," *American Economic Review*, 91(2001): 97-102.
- Center for Disease Control. 1997. "Update: Trends in AIDS Incidence -- United States, 1996," *Morbidity and Mortality Weekly Report*, 46(37): 861-867.
- Chaloupka, Frank, and Kenneth Warner. 2000. The Economics of Smoking. In Culyer and Newhouse (Ed.), *Handbook of Health Economics*, Vol. 1, Part B, Elsevier.
- Clark, Damon and Heather Royer. 2010. "The Effect of Education on Adult Health and Mortality: Evidence from Britain" NBER Working Paper No. 16013.
- Conley, Dalton and Jennifer Heerwig. 2009. "The Long-Term Effects of Military Conscription on Mortality: Estimates from the Vietnam-Era Draft Lottery." NBER Working Paper No. 15105.
- Cutler, David M. and Adriana Lleras-Muney. 2010. "Understanding Differences in Health Behaviors by Education." *Journal of Health Economics*, 29(1): 1-28.
- Davis, Jr., James W., and Dolbeare, Kenneth M. *Little Groups of Neighbors: The Selective Service System*. Chicago: Markham Publishing Company (1968).
- De Walque, D. 2007. "Does education affect smoking behaviors?: Evidence using the Vietnam draft as an instrument for college education," *Journal of Health Economics*, 26(5): 877-895.
- Dobkin, Carlos and Shabani, Reza. 2007. "The Health Effects of Military Service: Evidence from the Vietnam Draft" *Economic Inquiry*, 47(1): 69-80.
- Gade, Daniel and Jeffrey Wenger. 2011. "Combat Exposure and Mental Health: The Long-term Effects among US Vietnam and Gulf War Veterans." *Health Economics*. 20: 401-416.
- Grimard, F. and D. Parent. 2007. "Education and Smoking: Were Vietnam War Draft Avoiders Also More Likely to Avoid Smoking?" *Journal of Health Economics*, 26(5): 896-926.
- Grossman, Michael, 2006. "Education and Nonmarket Outcomes," *Handbook of the Economics of Education*, Elsevier.

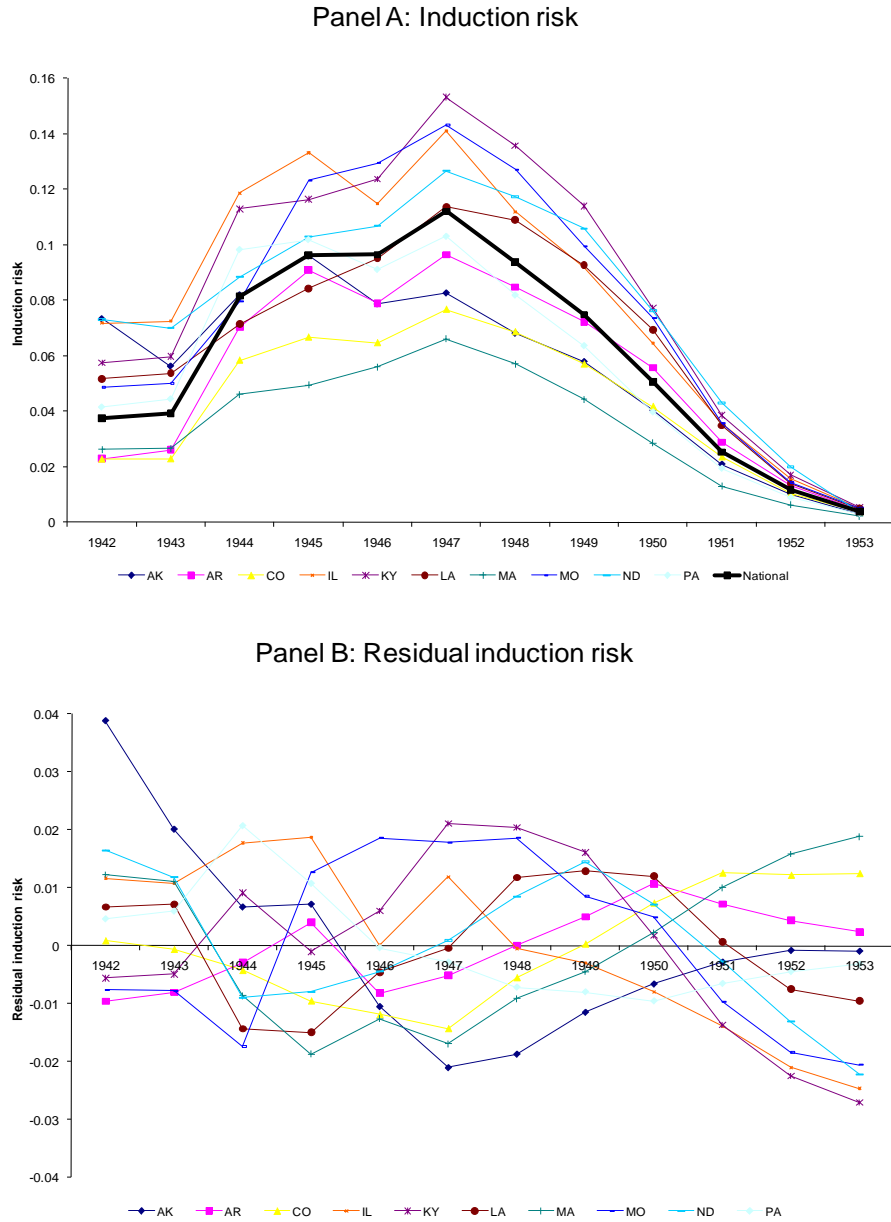
- Hearst, Norman, Thomas Newman and Stephen Hulley. 1986. "Delayed Effects of the Military Draft on Mortality." *New England Journal of Medicine*, 314: 620-624.
- Hipple, Steven, and Jay Stewart. 1996. "Earnings and Benefits of Workers in Alternative Work Arrangements," *Monthly Labor Review*, October 1996, 119(10): 46-54.
- Honoré, Bo and Adriana Lleras-Muney. 2006. "Bounds in Competing Risks Models and the War on Cancer." *Econometrica*, 74(6): 1675-1698.
- Kahn, Lisa. 2010. "The Long-Term Labor Market Consequences of Graduating from College in a Bad Economy." *Labour Economics* 17(2).
- Kane, Thomas; Cecilia Rouse and Douglas Staiger. 1999. "Estimating Returns to Schooling When Schooling is Misreported." *Industrial Relations Section Working Paper #419*. Princeton University.
- Lambert, Eric, Lois Ventura, Daniel Hall, and Terry Cluse-Tolar. 2006. "College Students' Views on Gay and Lesbian Issues: Does Education Make a Difference?" *Journal of Homosexuality*, 50(4): 1-30.
- Lleras-Muney, Adriana. 2005. The Relationship between Education and Adult Mortality in the United States. *Review of Economic Studies*, 72, 189-221.
- MacInnis, Bo. 2006. "The Long-Term Effects of College Education on Morbidities: New Evidence from the Pre-Lottery Vietnam Draft," *mimeo*, University of Michigan.
- Malamud, Ofer and Wozniak, Abigail. Forthcoming. "The Impact of College on Migration: Evidence from the Vietnam Generation." *Journal of Human Resources*.
- Mazumder, Bhashkar. 2008. "Does Education Improve Health? A Reexamination of the Evidence from Compulsory Schooling Laws." *Economic Perspectives*. 32(2): 2-16.
- Meghir, Costas; Marten Palme; and Emilia Simeonova. 2012. "Education, Health, and Mortality: Evidence from a Social Experiment." *IZA Discussion Paper #6462*.
- Miller, Sarah. 2012. "The Impact of the Massachusetts Health Care Reform on Health Care Use among Children." *American Economic Review Papers and Proceedings*, 102(3): 502-07.
- Office of the Vice President. Press release for March 22, 2011. "Vice President Issues Call to Action to Boost College Graduation Rates Nationwide." <http://www.whitehouse.gov/the-press-office/2011/03/22/vice-president-biden-issues-call-action-boost-college-graduation-rates-n>. Accessed 29 May 2012.

- Oreopoulos, Philip; Till von Wachter, and Andrew Heisz. 2012. "Short- and Long-Term Career Effects of Graduating in a Recession." *American Economic Journal: Applied*. 4(1): 1-29.
- Pearl, Judea. 2005. "Direct and Indirect Effects." In *Proceedings of the American Statistical Association Joint Statistical Meetings*, Minneapolis, MN: MIRA Digital Publishing, 1572-1581.
- Robins, James and Sander Greenland. 1992. "Identifiability and Exchangeability for Direct and Indirect Effects." *Epidemiology*. 3(2): 143-155.
- Rosenbaum, Paul R. (1984), "The consequences of adjustment for a concomitant variable that has been affected by the treatment", *Journal of the Royal Statistical Society Series A* 149: 656-666.
- Rothenberg, Leslie S. *The Draft and You: A Handbook on Selective Service*. New York: Doubleday & Company, Inc. Anchor Books (1968).
- Ruggles, Steven; and Matthew Sobek, Trent Alexander, Catherine A. Fitch, Ronald Goeken, Patricia Kelly Hall, Miriam King, and Chad Ronnander. *Integrated Public Use Microdata Series: Version 3.0* [Machine-readable database]. Minneapolis, MN: Minnesota Population Center [producer and distributor], 2004. URL: [www.ipums.org](http://www.ipums.org).
- U.S. Selective Service. "Semiannual Report of the Director of Selective Service." Washington, DC: U.S. Government Printing Office. Various issues from 1967 to 1973.
- Shapiro, Andrew O. and Striker, John M. *Mastering the Draft: A Comprehensive Guide to Solving Draft Problems*. Boston: Little, Brown and Company (1970).
- Siminski, Peter and Simon Ville. 2011. "Long-Run Mortality Effects of Vietnam Era Army Service: Evidence from Australia's Conscription Lotteries." *American Economic Review*. 101(3): 345-349.
- Sullivan, Daniel and Till von Wachter. 2009. "Job Displacement and Mortality: An Analysis Using Administrative Data." *Quarterly Journal of Economics*. 124(3): 1265-1306.
- Tatum, Arlo and Tuchinsky, Joseph S. *Guide to the Draft*. 2<sup>nd</sup> Edition. Boston: Beacon Press (1969).
- Turner, Sarah. 2004. "Going to College and Finishing College: Explaining Different Educational Outcomes." In *College Decisions: How Students Actually Make Them and How They Could*, ed. Caroline Hoxby. University of Chicago Press for NBER.



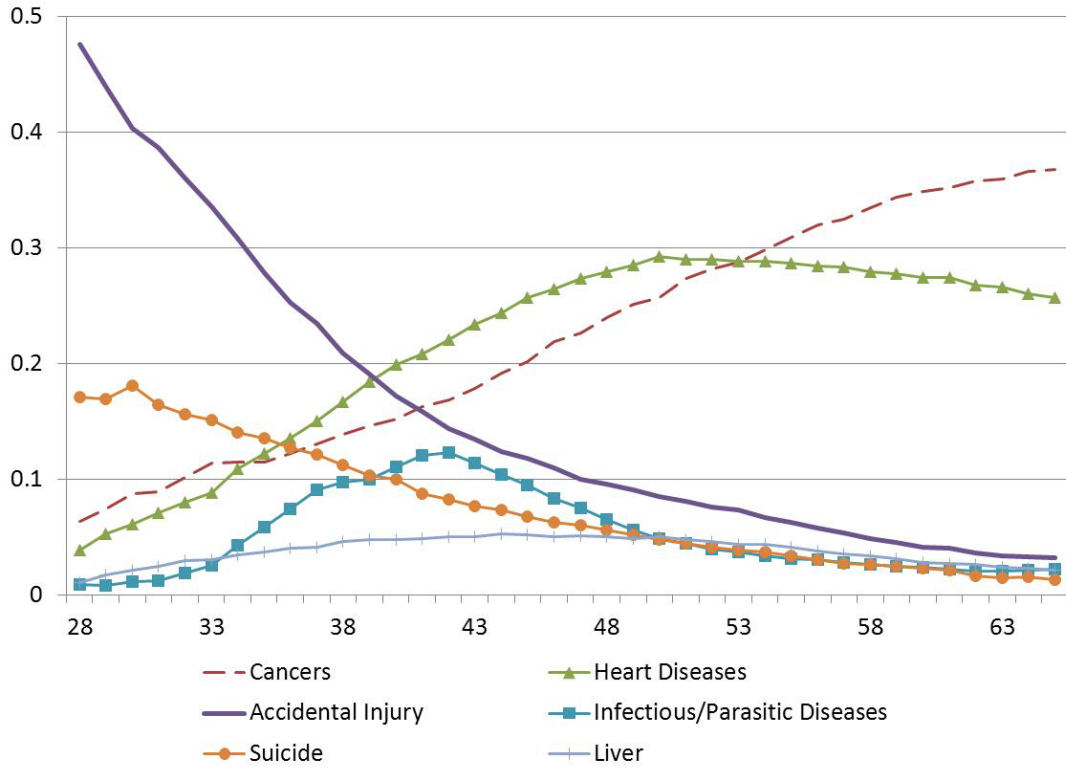
- United States National Advisory Commission on Selective Service. 1967. "In Pursuit of Equity: Who Serves When Not All Serve?" Report. Washington D.C. : U.S. Government Printing Office.
- Vollset, SE, A. Tverdal, HK Giessing. 2006. "Smoking and Deaths between 40 and 70 Years of Age in Women and Men." *Annals of Internal Medicine*, 144(6): 381-389.
- Woloshin, Steven, Lisa Schwartz and H. Gilbert Welch. 2008. "The Risk of Death by Age, Sex, and Smoking Status in the United States: Putting Health Risks in Context." *Journal of the National Cancer Institute*, 100(12): 845-853.
- Wooldridge, Jeffrey. *Econometric Analysis of Cross-section and Panel Data*. MIT Press: Cambridge, Massachusetts (2002).
- Wozniak, Abigail. (2010) "Are College Graduates More Responsive to Distant Labor Market Opportunities?" *Journal of Human Resources*.
- Xu, JQ, Kochanek KD, Murphy SL, Tejada-Vera B. (2010). Deaths: Final Data for 2007. National Vital Statistics Reports, 58(19). National Center for Health Statistics: Hyattsville, MD.
- Yoon, Young-Hee, and Hsiao-ye Yi. 2010. "Surveillance Report #88: Liver Cirrhosis Mortality in the United States, 1970–2007." Bethesda, MD: National Institute on Alcohol Abuse and Alcoholism, Division of Epidemiology and Prevention Research.

**Figure 1: Birth State-Birth Year Cohort Variation in Induction Risk**



Notes: Panel A plots state risk as defined in equation (6). Panel B plots equation (6) adjusted for birth state fixed effects, birth year trend, and national risk, as defined in equation (5).

**Figure 2: Fraction of Deaths Attributable to Common Causes, by Age**



Source: Mortality Detail Files, 1981-2007.

**Table 1: Summary Statistics**

VARIABLES	Mean	SD
<b>Census Data</b>		
Years of Higher Education	1.99	0.38
College Graduate	0.3508	0.0666
Veteran	0.3092	0.1231
Individual Observations	14,392,122	
<b>Mortality Data</b>		
<u>1981-2007 Mortality Rates by Cause of Death:</u>		
Total	138.58	38.03
Cancers	36.52	15.18
Heart Disease	35.73	13.99
Accidental Injury	13.67	3.49
Suicide	7.31	1.37
Infectious and Parasitic Diseases	7.20	2.41
Liver Disease	5.75	1.93
Diabetes	3.82	1.44
Cerebrovascular Disease (Stroke)	3.61	1.47
Chronic Low Respiratory Disease	3.21	2.16
Homicide	1.98	0.97
Total Deaths	1,994,481	
State/Birth Year Cells	600	

Notes: Census data are from the 5% sample of the 1980, 1990, and 2000 U. S. Census, available from IPUMS. Mortality data are from the Vital Statistics Multiple Cause of Death files from 1980 to 2007. The sample is restricted to white men born between 1942 and 1953. Veterans include any respondent that served in active duty in the Vietnam War. Respondents currently in active duty are excluded. Means are weighted by cell size. Mortality rates are deaths over the period per 1,000 population, where population is the cohort size in the first year of the period.

**Table 2: First Stage Estimates of Effect of Induction Risk on College Completion and Veteran Rates**

	Dependent Variable:					
	College Graduate	Veteran	College Graduate	Veteran	College Graduate	Veteran
National Induction Risk	0.935** (0.091)	2.349** (0.185)	1.899** (0.263)	2.865** (0.354)	2.368** (0.437)	1.237* (0.728)
National Risk ^2			-7.484** (1.644)	-3.891* (2.068)	-22.748** (5.946)	25.194** (9.238)
National Risk ^3					101.276** (29.076)	-154.080** (42.970)
State Induction Risk	-0.240** (0.089)	0.768** (0.162)	-0.380 (0.233)	0.653** (0.311)	0.588 (0.375)	1.171* (0.702)
State Risk ^ 2			0.770 (1.260)	0.627 (1.731)	-12.254** (4.646)	-5.907 (8.736)
State Risk ^ 3					54.507** (19.888)	25.502 (36.988)
F-Stat	19.18	123.00	16.07	269.77	21.89	277.53

Notes: F-statistic is for the test of the null hypothesis that all national and state induction risk variables are jointly insignificant. Specification refers to the functional form of the induction risk variables in the first stage regression. F-statistics are calculated using the Angrist-Pischke method for the case with multiple endogenous variables. Standard errors are clustered by birth state. See Table 1 notes for data sources, sample restrictions and variable definitions. Number of observations is 600 in each regression and regressions are weighted by cell size. Additional controls include birth state fixed effects, the employment to population ratio, the cohort size (derived from the 1960 Census and defined at the birth-year level), and birth-region trends.

**Table 3: OLS and IV Estimates for the Impact of College Completion Rates on Cumulative Mortality, 1980-2007**

	OLS [1]	IV Specification:				
		Linear-2SLS [2]	Quadratic-2SLS [3]	Quadratic-LIML [4]	Cubic-2SLS [5]	Cubic-LIML [6]
College Graduate	-101.97*** (19.59)	-99.26 (77.55)	-170.76*** (38.34)	-172.46*** (39.22)	-93.93*** (25.56)	-93.53*** (26.69)
Veteran Status	-46.36*** (5.14)	-42.93*** (16.43)	-27.21*** (9.67)	-26.82*** (9.86)	-44.45*** (6.81)	-44.50*** (7.03)
Observations	600	600	600	600	600	600
R-squared	0.9516	0.9515	0.9505	0.9504	0.9515	0.9515

Notes: Standard errors are in parenthesis and are clustered by birth state. \*\*\*, \*\*, and \* indicate statistical significance at the 1, 5, and 10 percent level respectively. See Table 1 notes for data sources, sample restrictions and variable definitions. The IV specifications use the national and state-level induction risk to instrument for college graduate and veteran status. The column headings indicate the functional form of the instruments in the first stage equation (linear, quadratic, or cubic) and the choice of model (two-staged least squares or limited-information maximum likelihood). Number of observations is 600 in each regression and regressions are weighted by cell size. Additional controls include birth state fixed effects, the employment to population ratio, the cohort size (derived from the 1960 Census), and birth region trends.

**Table 4: OLS and IV Estimates for the Impact of College Completion Rates on Mortality by Decade**

VARIABLES	1981-1990		1991-2000		2001-2007	
	OLS	IV	OLS	IV	OLS	IV
College Graduate	-24.51*** (4.56)	-24.38*** (6.43)	-20.00** (9.10)	-79.46*** (30.46)	-38.58*** (11.26)	-100.37*** (37.05)
Veteran Status	-9.93*** (1.10)	-9.33*** (1.36)	-35.54*** (2.20)	-27.32*** (4.49)	-36.99*** (2.53)	-28.80*** (6.06)
First Stage F-Stat for:						
College Grad	21.89		8.91		5.81	
Veteran	277.53		100.11		101.06	
Mean Mortality Rate	25.46		54.88		73.33	
Total Deaths	366,365		727,108		901,008	

Notes: Standard errors are in parenthesis and are clustered by birth state. \*\*\*, \*\*, and \* indicate statistical significance at the 1, 5, and 10 percent level respectively. See Table 1 notes for data sources, sample restrictions and variable definitions. The IV specifications use a third-order polynomial in the national and state-level induction risks to instrument for college graduate and veteran status using a 2SLS model. Number of observations is 600 in each regression and regressions are weighted by cell size. Additional controls include birth state fixed effects, the employment to population ratio, the cohort size (derived from the 1960 Census), and birth region trends.

**Table 5: OLS and IV Estimates for the Impact of College Completion Rates on Mortality,  
by Leading Causes of Death**

	Cancers	Heart Disease	Accidental Injury	Suicide	Infectious/ Parasitic	Liver Disease	Diabetes	Stroke	Chronic Low Resp.	Homicide
<b>Panel A: OLS</b>										
College Graduate	-38.34*** (6.57)	-32.29*** (5.95)	-5.21** (2.11)	-0.68 (1.47)	-2.62 (2.46)	-1.19 (1.54)	-2.41 (1.52)	-2.98*** (0.86)	-5.33*** (1.56)	-1.62** (0.63)
Veteran Status	-15.88*** (1.69)	-10.16*** (1.81)	-3.20*** (0.60)	-1.71*** (0.46)	-0.980** (0.45)	-1.250*** (0.41)	-0.730** (0.36)	-1.79*** (0.28)	-4.00*** (0.36)	0.04 (0.16)
<b>Panel B: IV</b>										
College Graduate	-61.90*** (9.18)	-45.07*** (11.32)	-0.71 (4.92)	4.24 (3.02)	14.75*** (5.19)	12.20*** (4.16)	-7.04*** (2.21)	-6.61*** (1.94)	-9.11*** (2.65)	-0.10 (1.49)
Veteran Status	-9.72*** (2.45)	-6.64** (3.20)	-3.81*** (1.15)	-2.74*** (0.80)	-4.56*** (1.18)	-4.04*** (0.94)	0.35 (0.48)	-0.88* (0.45)	-3.05*** (0.56)	-0.22 (0.35)

Notes: Standard errors are in parenthesis and are clustered by birth state. \*\*\*, \*\*, and \* indicate statistical significance at the 1, 5, and 10 percent level respectively. See Table 1 notes for data sources, sample restrictions and variable definitions. The IV specifications use a third-order polynomial in the national and state-level induction risks to instrument for college graduate and veteran status using a 2SLS model. Number of observations is 600 in each regression and regressions are weighted by cell size. Additional controls include birth state fixed effects, the employment to population ratio, the cohort size (derived from the 1960 Census), and birth region trends.



Table 6: The Causal Impact of College Completion Rates on Earnings and Wages

<b>Panel A: Log earnings</b>	IV Specification					
	OLS [1]	Linear 2SLS [2]	Quadratic 2SLS [3]	Quadratic LIML [4]	Cubic 2SLS [5]	Cubic LIML [6]
College Graduate	0.427*** (0.086)	0.055 (0.267)	0.561*** (0.183)	0.581*** (0.206)	0.780*** (0.140)	0.831*** (0.151)
Vet Status	0.170*** (0.035)	0.283*** (0.076)	0.136*** (0.053)	0.130** (0.059)	0.07 (0.044)	0.055 (0.047)
Mean of dep. variable	9.542	9.542	9.542	9.542	9.542	9.542
Observations	600	600	600	600	600	600
<b>Panel B: Log wages</b>	IV Specification					
	OLS [1]	Linear 2SLS [2]	Quadratic 2SLS [3]	Quadratic LIML [4]	Cubic 2SLS [5]	Cubic LIML [6]
College Graduate	0.230*** (0.051)	0.064 (0.171)	0.206 (0.135)	0.205 (0.139)	0.393*** (0.085)	0.405*** (0.088)
Vet Status	0.125*** (0.022)	0.172*** (0.052)	0.131*** (0.043)	0.132*** (0.044)	0.075** (0.034)	0.072** (0.035)
Mean of dep. variable	1.964	1.964	1.964	1.964	1.964	1.964
Observations	600	600	600	600	600	600

Notes: Standard errors are in parenthesis and are clustered by birth state. \*\*\*, \*\*, and \* indicate statistical significance at the 1, 5, and 10 percent level respectively. Data are birth state-cohort cell averages from white men in the 1980 Census IPUMS extracts, born between 1942 and 1953. First stage specifications use cubic functions of induction risk and are identical to those in the last two columns of Table 2. Dependent variable is log real earnings or log real wages. Underlying microdata sample is therefore restricted to those with valid earnings in 1980. We truncate the top and bottom 1 percent of the hourly wage distribution. Specifications are otherwise identical to those in Table 3. Number of observations is 600 in each regression and regressions are weighted by cell size.

**Table 7: College Completion Rates and Health Insurance Access**

	Percent with Coverage	OLS		IV	
		College Graduate	Veteran	College Graduate	Veteran
<i>ACS Sample</i>					
Any Insurance	92.4%	0.061*** (0.003)	0.048*** (0.003)	0.156** (0.095)	0.079*** (0.023)
Private Coverage	83.7%	0.149*** (0.006)	0.012** (0.002)	0.187* (0.166)	0.000 (0.028)
Public Coverage	17.9%	-0.129*** (0.004)	0.163*** (0.005)	0.005 (0.153)	0.272*** (0.033)
<i>1980 NHIS</i>					
Any Insurance	89.0%	0.094*** (0.010)	0.036** (0.009)	-	-
Private Coverage	86.8%	0.111*** (0.010)	0.035*** (0.005)	-	-
Public Coverage <sup>a</sup>	2.0%	-0.019*** (0.002)	-0.001 (0.004)	-	-

Notes: ACS data are from survey years 2008-2010, NHIS data are from the 1980 Health Insurance Supplement. Both samples are restricted to white, male respondents born between 1942 and 1953, and aged 64 or younger at the time of the survey. Each “College Graduate” and “Veteran” pair are coefficients from a single regression. ACS specifications are estimated using microdata but are otherwise identical to those in Table 4, with the addition of survey year controls. Standard errors clustered on birth state in ACS estimates. First stage F statistics are 6.3 and 88.4 for college graduate and veteran status, respectively, in the IV specifications using ACS data. NHIS specifications include region fixed effects and region-specific linear trends in year of birth. Standard errors are clustered by the four Census regions of residence in the NHIS. The NHIS sample is 6,292 men where 30.1% are college graduates and 41.7% are veterans. \*\*\*, \*\*, and \* indicate statistical significance at the 1, 5, and 10 percent level, respectively. <sup>a</sup>In the 1980 Health Insurance Supplement for the NHIS, individuals are reported as having Medicare, or could report receiving services through Medicaid/Welfare or Champus.

**Table 8: Acute Health Outcomes and Health Behaviors**

<i>Dependent Variable</i>	<b>N</b>	<b>Mean / Percent</b>	<b>College Graduate</b>		<b>Veteran</b>	
Body Mass Index (BMI)	3,069	25.82	-1.081**	(0.294)	0.084	(0.093)
Obese (BMI ≥30)	3,069	10.9%	-0.066*	(0.022)	-0.011	(0.008)
Ever told had:						
Hypertension	3,031	18.7%	-0.017	(0.012)	0.006	(0.007)
High cholesterol	3,035	4.5%	0.013	(0.014)	-0.015**	(0.004)
Heart Condition	3,033	3.2%	-0.003	(0.006)	0.002	(0.011)
Stroke	3,035	0.5%	-0.004*	(0.001)	0.003	(0.002)
Has Diabetes	3,032	1.3%	0.002	(0.002)	-0.006	(0.003)
Any Restricted Days in Past 2 Wks	3,069	8.0%	-0.008	(0.009)	0.013	(0.013)
Any Work Loss Days in Past 2 Wks	3,069	4.7%	0.000	(0.006)	0.016	(0.015)
Any Bed Days in Past 2 Wks	3,069	4.2%	-0.001	(0.006)	0.010	(0.009)
A Lot of Stress in Past 2 Weeks	3,018	22.7%	0.039*	(0.012)	-0.010	(0.017)
Ever Smoked 100 Cigarettes	3,030	67.2%	-0.200***	(0.008)	0.074***	(0.012)
Smoke Now	3,006	37.6%	-0.213***	(0.016)	0.062**	(0.013)
Any days in Past Year 5+ Drinks	2,977	44.1%	-0.030	(0.011)	0.071**	(0.015)
25+ days in Past Year 5+ Drinks	2,977	14.0%	-0.082**	(0.023)	0.005	(0.009)
Any Drunk Driving in Past Year	2,996	20.9%	-0.008	(0.014)	0.014	(0.023)
Exercise or play sports regularly	3,036	45.0%	0.249***	(0.019)	0.011	(0.014)

Notes: Data are from the 1985 NHIS HPDP Supplement. The sample is restricted to white, male respondents born between 1942 and 1953. Each “College graduate” and “Veteran” pair are coefficients from a single regression. Specifications are estimated using microdata at the individual-level and include region-specific linear trend in birth cohort and region of residence fixed effects. \*\*\*, \*\*, and \* indicate statistical significance at the 1, 5, and 10 percent level respectively. With the exception of BMI, all dependent variables are dichotomous and estimates are from a linear probability model. For the full sample of 3,069, 32.6% are college graduates and 38.1% are veterans. Standard errors are clustered by the four Census regions of residence.